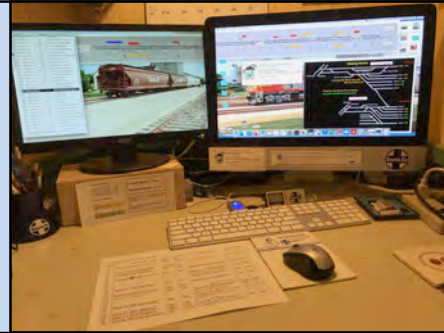


Michiana Division

National Model Railroad Association
Midwest Region

FORM - 19**Model Railroading in the Digital Age****A publication of the NMRA, Midwest Region, Michiana Division**

A word about the FORM-19 Masthead. Model Railroading in the Digital Age is the slogan of the Newsletter. In keeping with this line we will feature images depicting aspects of digital modeling. Currently we are showcasing an image from Tom Cain of his JMRI dispatcher station on his Eastern Illinois Santa Fe Railroad. You can send your images for possible use in the masthead to chart7968@yahoo.com.

**4th QUARTER
DIVISION EVENT
SCHEDULE**

**SATURDAY, October 16
10:00AM - 3:00PM ET**

Elkhart Train Show
(Page 1)

**SATURDAY, November 20
10:00AM CT, 11:00PM ET**

**Location TBD
Division meet
AP Discussion
Golden Spike**

**SATURDAY, December 18
10:00am CT, 11:00am ET**

**Location and Subject
TBD**

**PLEASE,
STAY SAFE
AND HEALTHY**



**October 2021 Form-19
Superintendent's Message.
Greetings Model Railroaders!**

Let me again invite you to our informal gatherings on Thursday evenings. These Thursday Model Railroad Zoom calls started in May 2020 with a small group and have grown to include many devoted model railroaders from all over the country. The topics are as varied as the people who present. If you are interested in receiving an invite to these gatherings, please contact me at greg@uncleheavy.com.

Greg Buelmann, Division Superintendent

Elkhart Model RR Club Train Show

This years Elkhart Train Show is scheduled for Saturday October 16, 2021. There will be 150 vendor tables of products for all scales of model railroading, books and prototype railroad items. Show hours are 10:00am to 3:00pm Eastern Time. Address is 13924 N 1100 W (County Line Road), Nappanee, Indiana 46550

Admission is \$5.00, Ages 12 & under free with paid adult.

For complete show information and other up to date Club happenings please visit the Club's website at: www.emrrc.com

Welcome to the 4th Quarter of the FORM-19 for 2021

Invitation: Please join us in our meetings for fellowship and learning with other model railroad enthusiasts. We meet on the 3rd Saturday, almost every month. See the location, time and topic at <http://michiana-nmra.org/meetings.html> as well as topics from previous meetings. The **next meeting** is **November 20**. You will receive an email via “**groups.io**” with additional information for the meeting.

Future meetings & ideas for topics: Future meetings are planned for the Division to meet at the Elkhart New York Central Railroad Museum in August and a Layout Tour hosted by Michiana Superintendent Greg Bueltmann in September. The Division would like to meet at alternate locations between eastern and western areas of the Division, attracting more members from west of La Porte. Also, we may be able to “Zoom” some meetings in the future for those who cannot attend in person. We invite you to suggest topics interesting to you. You can do this by posting your ideas on the Division’s **groups.io**. Meeting locations and other attractions are mapped at <http://www.michiana-nmra.org> just click on “Resources” “Michiana Division Interactive Map”.

From the “What is this?” guy. Tell us your guess on the Michiana groups list.



The Division met in person during the summer months.

In July the Division met at the Hoosier Valley Museum at North Judson, IN. Unfortunately there was a small turnout of attendance. I was also unable to attend; however I understand the weather was dismal so we’ll blame the small turnout on the weather. See page 3 for pictures submitted of the July event day.

In August the Division met at the New York Central Railroad Museum. The weather was perfect to view outside displays. The turnout was very good with 12 people attending. See page 4 for pictures submitted of the event day.

In September the Division went on a road trip west! The day started at Ogden Dunes to railfan at the Indiana Harbor. Next we grouped up to tour Greg Bueltmann’s HO scale CNW/MILW Upper Peninsula Michigan Ore Line layout. Then it was off to the Griffith Historical Park and Train Museum with a tour given by Karen Kulinski. After the tour everyone agreed it was time for lunch. The Train Depot in Munster proved to be a great spot to eat. After lunch it was time to be on our own for Railfanning while heading home. See pages 5-8 for photos of our September road trip day.

Photos by Ron Christensen MMR during the Division's day trip to the Hoosier Valley Railroad Museum



Ron found a couple neat old trucks on his way to the museum.



Ron couldn't resist a picture of a C&NW PS1 Boxcar and he just can't pass up silos without taking it's picture.



The highlight of the day was seeing the two visiting BL2 locomotives.

A group photo and some pictures from Ron Christensen MMR during the Division's visit to the New York Central Museum in August.



Attending from left to right.

Ben & Valerie Brubaker, Greg Bueltmann, Margret and John Banicki, Chuck Hart, Jim Locke, Dan Brewer, Neal Thomas, Jim Temple, Ron Christensen, and Ron Jillson .



Photos by Chuck Hart during the Division's road tip on September 18th.

Our 1st stop for the day was at Ogden Dunes for some train



Left: The head end of a NS stack train heading west though Ogden Dunes.

Right: West bound Capital Limited 29 headed to Chicago through Ogden Dunes. Allen Black is arriving just in time to see the train.

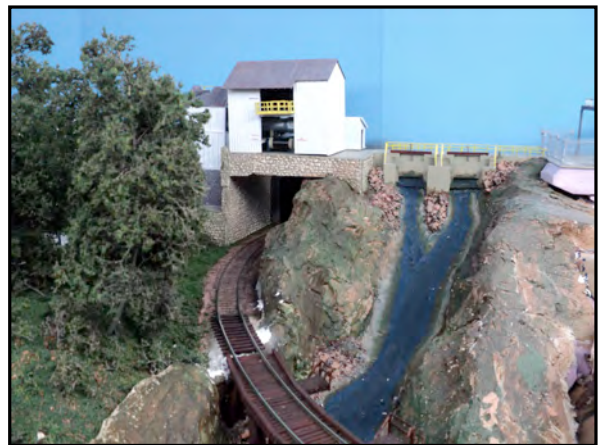


Left: East bound BNSF coal empty as we all line up for the photo run by!

Right: West bound NS tanker with a nicely weathered CP unit helping it along.



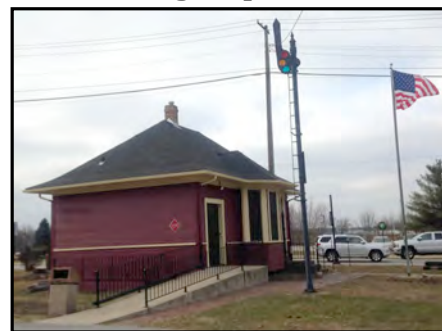
From Ogden Dunes we all headed over to Greg Bueltmann's home for a tour of his CNW/MILW Upper Peninsula Michigan Ore Line.



Next it we visited the Griffith Historical Park and Railroad Museum.



Left: Karen Kulinski, Secretary of the Griffith Historical Society, gave us a presentation of the museum and answered the many railroad questions from our group.



Above: Circa 1912 Grand Trunk Combination Depot.



Left and below: Duane Henry looks down from the tower at some of the railroad equipment on display at the museum.



Left: Track board on display in the tower operator's room.

No day of Railfanning is complete without a stop at a hobby shop or two!



Above: G&G Hobbies is a main stay in Griffith, IN.



Above Right: The Munster Train Depot is new as of February 2020 and specializes in N Scale products. Frank Rapin owns the shop and graciously provided a terrific lunch for our group. Model railroaders love to eat.

Our last stop of the day included a tour of the highly detailed, lighted and animated layout at the home of Tom Stathis. Photos by Chuck Hart.



Rolling Stock Maintenance & Repair, By James Temple

Good maintenance of model railroad rolling stock helps eliminate operating problems, puts broken cars back in service, and often improves their appearance by replacing or adding detail parts.

Operations will be greatly enhanced by (a) good couplers at correct heights, (b) clean, free rolling, in-gauge wheels, and (c) optimal car weights. Below are my 18 maintenance steps. Find the full process in the CLINIC files at the following link:

<https://nmramichiana.groups.io/g/members/files/Clinics,%20Tips,%20How%20to%27s,%20Technics>

1. Visually inspect and make list of detail parts to replace.
2. Weigh the car, keeping in mind that replacing plastic wheels with steel will add a ¼ oz. of weight.
3. Collect the bits and pieces, such as, weights, replacement detail parts, new wheels, new couplers, etc.
4. Check coupler heights and coupler action. Even if couplers are replaced, it may be necessary to add a fiber washer or two, and you can get an idea of that height adjustment requirement before taking off the trucks.
5. Remove trucks and gauge wheels if they are to be retained.
6. Remove wheels from trucks.
7. Check wheel gauge on new wheels. Adjust gauge on wheels (new or used) if necessary, by squeezing wheels outward or inward on the axle. See that wheels are equidistant from their respective ends of the axle. Wheels that are off-center on an axle are not a good thing.
8. "Tune" and lubricate wheel axle pockets on the trucks, cleaning out the pockets with a Micro-Mark tuner and placing a drop of Labelle's 102 or other acceptable light lube in each pocket.
9. Replace gauged wheels in trucks, and give them a little push on the test track to see how nicely they roll.
10. Remove car body and add lead weight, if needed. (For open cars and tank cars, more creative remedies are required to add weight.) Reassemble.
11. If replacing or repairing couplers, open coupler pockets and replace couplers and/or coupler centering springs. When placing whisker couplers, make sure the whiskers are set down inside the coupler box.
12. Close coupler box and test centering action to ensure coupler is working well. Maybe add a squirt of graphite lube. If not working well, reopen pocket and check to make sure spring is working or whisker is completely inside the coupler box. Close it up and test again.
13. If there's an expected need to raise the body-mounted couplers above the trucks, place a fiber washer or two as trucks are re-attached to the body.
14. With trucks back on and couplers working, check the coupler and trip pin heights with the height gauge. If the coupler is too high, remove trucks and remove a fiber washer. If too low, remove trucks and add a washer. Put the trucks back on.
15. Once the coupler height is correct, check the trip pin height again. The trip pin should be bent up or down as necessary, to be at the correctly gauged height. Be sure to hold onto the coupler and car body while bending a trip pin. Make sure to hold the car in a way to avoid breaking detail parts. Proper grasp, finger position and pressure are learned things.
16. Test-roll the car on inclined track so you may appreciate the improved results from truck tuning and proper weighting.
17. Add missing detail parts, hatches, ladders, stirrup steps, brake wheels, brake staffs, underbody detail, etc. If adding stirrup steps, it may be helpful to take the trucks off again. It may be a good idea to add detail parts after doing couplers, wheels and trucks just so all that handling doesn't break off a new detail part.
18. Touch-up paint and weather, as desired. Again, it's usually a good idea to do this after all the intensive handling for repairs or rebuilding. Apply DullCoat spray, or a preferred alternative product, if chalks or powders are used for weathering or if a bright shiny paint job needs to be toned down.



NATIONAL MODEL RAILROAD ASSOCIATION, INC.

P.O. Box 1328
Soddy Daisy, TN 37384-1328
Phone (423) 892-2846 FAX (423) 899-4869
Email: nmrahq@aol.com Website: www.nmra.org

Complete all personal information, select membership type(s) and subscription choices. Enter all totals in Payment block below.

Welcome Aboard the NMRA!

New Member Application

Name:					
Address:					
City:		State:		Zip:	
Phone:		Birth Date:		Scale:	
Email:		Occupation:			

NMRA Membership Type Circle the Option of Your Choice	1 Year	Total
Member with NMRA Magazine Subscription - All Rights and Benefits; includes <i>NMRA Magazine</i>	\$82.00	
Member without NMRA Magazine Subscription – All Rights and Benefits; does not include <i>NMRA Magazine</i>	\$50.00	
Family - Spouse or Minor Child of above member in good standing. No <i>NMRA Magazine</i> or voting rights. Provide each Family Member's name and date of birth below: Name: _____ DOB: _____	\$9.00	
Student - Any person 18 yrs and under or student between the ages of 19 - 25 yrs possessing valid student ID. All Rights and Benefits and the <i>NMRA Magazine</i> DOB: _____	\$40.00	
Sustaining - Mandatory for Group Memberships (Clubs, Associations, Businesses). All Rights and Benefits and the <i>NMRA Magazine</i>	\$120.00	

Region Subscription Options for <u>New</u> Member (First Year \$6.00)					
Circle the Options of Your Choice					
Subscription Type	1 Yr			Subscription Type	1 Yr
21-Northeastern Subscription	\$6.00			29-Mid Continent Subscription	0
22-Niagara Frontier Subscription	0			30-Mid Eastern Subscription	0
23-North Central Subscription	\$6.00			31-Lone Star Subscription	0
24-Thousand Lakes Subscription	0			32-Mid Central Subscription	0
25-Pacific Northwest Subscription	0			33-Southeastern Subscription	\$6.00
26-Pacific Coast Subscription	\$6.00			36-Sunshine Subscription	\$6.00
27-Rocky Mountain Subscription	0			37-Pacific Southwest Subscription	0
28-Midwest Subscription	\$ 6.00			* Out of region subscribers may be charged additional fees by Region	

Phone:		PAYMENT	NMRA Membership Total:	\$
			Region Subscription Total:	\$
E-Mail:			Grand Total:	\$

Go to the NMRA website at www.nmra.org and visit the online store for latest merchandise updates

We also accept MasterCard, Visa, American Express and Discover.

Credit Card No: - - - - Security Code

Expiration Date:

--	--

--	--

Month Year

Signature

Return entire renewal notice along with your payment.

All Payments must be made in U.S. FUNDS ONLY • Make checks payable to NMRA

MIDWEST REGION NEWS<http://www.mwr-nmra.org>

Registration for the May 18-22, 2022 *Indy Junction*
Tri-Region 2022 convention is now OPEN
***Indy Junction* will be jointly hosted by the three regions.**
The convention facility will be
The Marriott East
7202 E 21st St
Indianapolis, IN 46219

Support Your Michiana **Division**

<http://www.michiana-nmra.org>***NOTICE - Michiana Division YouTube Channel is now live!***

You can now view videos from our Division ZOOM meetings and other events videos. Check out our YouTube channel at <https://www.youtube.com/channel/UCbvaWZMhVoRweILW3aiXZlQ>
 We will be transferring previous videos and others into that channel as time permits.

Michiana Division - 2815

The Michiana Division was activated effective September 13, 2009.
 Includes the following Counties in Indiana: Elkhart, Fulton, Jasper, Lake, La Porte, Marshall, Newton, Porter, Pulaski, Saint Joseph, and Starke and the following Counties in Michigan: Berrien and Cass.

DIV. SUPERINTENDENT	GREG BUELTSMANN	greg@uncleheavy.com
ASST. SUPERINTENDENT	RICHARD SMURAWSKI	rsmurawski@msn.com
CHIEF CLERK	NEAL THOMAS	nfthomas@prodigy.net
PAYMASTER	JIM TEMPLE	jngtemple@yahoo.com
DIRECTOR-AT-LARGE	JOHN BANICKI	jjbmish@gmail.com
DIRECTOR-AT-LARGE	RON CHRISTENSEN, MMR	rxensen@yahoo.com
DIRECTOR-AT-LARGE	CHUCK HART	chart7968@yahoo.com
DIRECTOR-AT-LARGE	RICH TROWBRIDGE	richtrow@frontier.com
MEMBERSHIP CHAIRMAN	NEAL THOMAS	nfthomas@prodigy.net
MWR DIRECTOR	GERALD PETERSON	babbette4@comcast.net