

# **Michiana Division**



National Model Railroad Association  
Midwest Region

## **FORM - 19**

Model Railroading in the Digital Age



## A publication of the NMRA, Midwest Region, Michiana Division

Model Railroading in the Digital Age is the slogan of the Newsletter.

We will feature electronic information depicting aspects of analog and digital modeling when possible.

### Inside this issue

- PG 1 Super's Message**
- PG 2 General Information**
- PG 3 Division News**
- PG 4 Article, Sintra Board**
- PG 5 Construction Project  
Concrete Loading Dock**
- PG 8 MWR News**
- PG 9 NMRA MEMBERSHIP  
APPLICATION**
- PG 10 Michiana Division  
Information**

PLEASE,  
STAY SAFE AND  
HEALTHY

### From the Michiana Division Superintendent:

One of the great joys of model railroading is that it brings together people of all skill levels, interests, and backgrounds. Whether you're just starting to lay your first track or you've been building layouts for decades, there is always more to learn and always someone to share the journey with.

That's why getting involved in the Michiana Division is so important. Our division isn't just about trains—it's about people. When you attend meetings, participate in clinics, or join in on layout tours, you're not only sharpening your modeling skills but also building friendships that can last a lifetime.

The NMRA offers an incredible wealth of knowledge, but it's at the local level—right here in our division—where that knowledge becomes personal. Perhaps you'll discover a new weathering technique, get advice on wiring challenges, or find encouragement to tackle that big project you've been putting off. Equally important, you'll enjoy the fellowship of people who share your passion.

I encourage you to take the next step: come to a meeting, volunteer to present something you've learned, or simply spend time getting to know your fellow members. You'll be surprised at how much you'll gain—not just in your modeling, but in your friendships as well.

Together, we can keep our hobby vibrant and thriving in Michiana. Let's inspire each other, learn from one another, and most of all, enjoy the journey.

Best Regards,  
Greg Bueltmann  
Superintendent, Michiana Division NMRA

## Welcome to the 4TH Quarter of the FORM-19 for 2025

***REMINDER: The Michiana Division has moved our regular Saturday meetings back to the third Saturday of the month.***

**Invitation:** Please join us in our meetings for fellowship and learning with other model railroad enthusiasts. We meet on the 3rd Saturday, almost every month. See the location, time, and topic at <http://michiana-nmra.org/meetings.html> as well as topics from previous meetings. The **next regular meet** is **October 18, 2025**.

**Future meetings & ideas for topics:** Future meetings for the Division would like to alternate locations between eastern and western areas of the Division, attracting more members from west of La Porte. Also, we may be able to “Zoom” some meetings in the future for those who cannot attend in person. We invite you to suggest topics interesting to you. You can do this by posting your ideas on the Division’s **groups.io**. Meeting locations and other attractions are mapped at <http://www.michiana-nmra.org> just click on “Resources” “Michiana Division Interactive Map”.

## MICHIANA DIVISION ROAD TRIP IDEAS

### **SWAP MEETS AND TRAIN SHOWS**

Here is a source for train shows and swap meets that may be in the primary area of the Michiana Division and the five state areas of Wisconsin, Illinois, Indiana, Michigan, and Ohio.

<https://www.trainshowlist.com>

### **KALAMAZOO TRAIN SHOW**

#### ***45th Annual Model Train Show & Sale***

Presented by Kalamazoo Model Railroad Historical Society  
Sunday, November 2nd, 2025, between 10AM – 3PM ET  
Kalamazoo County Expo Center  
2900 Lake St., Kalamazoo MI.

### **LA PORTE COUNTY SWAP MEET**

Presented by Duneland Model Railroad Club  
Sunday, November 23, 2025, between 9:30AM – 2:00pm CT  
La Porte County Fairgrounds Community Building  
2581 IN-2, La Porte, IN.

**MICHIANA DIVISION ELECTION NOTICE**  
**Michiana Division Superintendent Election.**

Greg Bueltmann is serving the Michiana Division in the Superintendent position and has termed out. It is time to elect a new Michiana Division Superintendent. In accordance with the Michiana Division Bylaws, Superintendent elections occur in odd number years. The Division Superintendent position is a two year term. Please consider running for this important Division position. Earn NMRA Achievement Program Points toward Volunteer or Official Certificates. Contact the Division Nominating Committee with you name and a short bio to James Temple, email: [jngtemple@yahoo.com](mailto:jngtemple@yahoo.com)

**MICHIANA DIVISION FALL MEETS**

**Saturday, October 18<sup>th</sup>**

**MONON CONNECTION MUSEUM & WHISTLE STOP RESTAURANT**

**10012 US-421, Monon, IN 47959**

The collection features over 6,500 unique railroad artifacts, including items from Abraham Lincoln's funeral train; a 14'x20' functioning HO-scale model railroad; and one of the most opulent private railcars from the Victorian era: Flagler Car Number 90, which we allow visitors to walk through. In addition to this, our restaurant's banquet hall, hosts an extensive display of 200 accurate circus model trains guaranteed to delight any model enthusiast. The entire restaurant is wheelchair accessible, as is the museum (save for one exhibit) and our meals are well-priced and just as delightful. With our highly knowledgeable tour guides and friendly waitstaff, you will have a wonderful outing! The museum is open Fridays through Sundays from 11am-5pm EST, and the restaurant is available at those times as well.

**Saturday, November 15<sup>th</sup>**

**Local Layout Tours in November**

**Division 9 Layout Tours**

**For National Model Railroad Month, the Michiana Division will be joining Division 9 to attend 3 layout tours. Please remember these tours are for NMRA members.**

Three local Schoolcraft, MI layout tours are scheduled for Saturday, November 15th. (Tour visit times will be published in the November FORM-19 Bulletin)

The first tour will be at Jim Fankhauser's, followed by a tour of Jim Nichol's layout hosted by Kevin and Shella Nichols and we will wrap up the day with a tour of Greg Stonerock's layout.

Addresses for each of the three layouts are listed below:

1. **Jim Fankhauser** – \_15545 S 2nd Street, Schoolcraft, MI.
2. **Jim Nichols** - 5746 West VW Ave, Schoolcraft, MI.  
(west of Schoolcraft on VW, off of 131)
3. **Greg Stonerock** - 9344 S 8th St, Schoolcraft, MI.

**December 2025**

**No meet scheduled.**

**Merry Christmas and we'll see you in 2026.**

# SINTRA BOARD



## What is sintra board?

Sintra is a brand name for "Extruded PVC Foam Board"

Sintra board (polyvinyl chloride pvc), is known for their remarkable versatility and durability. From retail signage to intricate architectural designs, these lightweight PVC boards offer unparalleled benefits. At the core of Sintra boards lies a robust yet lightweight PVC material. Sintra PVC is stronger and more durable than wood or foam boards, making it great for indoor and outdoor projects.

## ADVANTAGES OF USING SINTRA PVC BOARDS

Sintra boards are not just another plastic material; they are a game-changer in the world of durable, versatile plastic sheets.

- **Weather Resistance:** Ideal for outdoor applications, Sintra PVC boards withstand various weather conditions without compromising their integrity.
- **Corrosion and Chemical Resistance:** These boards resist chemical spills and corrosion, ensuring longevity in industrial environments.
- **Ease of Printing and Aesthetic Customization:** Sintra PVC is a perfect canvas for printing, allowing for vibrant and lasting visuals.
- **Cost-Effectiveness:** While offering premium qualities, Sintra PVC remains an affordable solution for a range of projects, from small-scale models to large industrial applications.

## SINTRA PVC VS. OTHER MATERIALS

- When it comes to choosing materials for your projects, understanding the differences between options is crucial. Compared to traditional materials like acrylic or polycarbonate, Sintra PVC offers enhanced flexibility and ease of fabrication. Its unique composition allows for both rigid and flexible applications, making it more versatile.

## CUSTOMIZE SINTRA PVC BOARDS

Customizing Sintra PVC boards is straightforward, making them ideal for a range of creative and functional applications:

- **Cutting and Shaping:** Sintra PVC can be easily cut and shaped using standard woodworking tools, offering versatility in design.
- **Printing and Painting:** The smooth surface of Sintra PVC is perfect for high-quality printing and painting, allowing for vibrant and detailed imagery.
- **Installation Tips:** Lightweight yet sturdy, these boards can be installed with basic hardware, making them suitable for a variety of settings.

## SOURCES

Big box stores, craft stores, office supply stores, on-line locations and cutoffs from sign makers.

## COMMON GLUES

Cyanoacrylate Super Glue

Two-part epoxy

Contact cement

PVC-specific adhesive

E6000

And many others.

## Concrete Loading Dock

### By Chuck Hart

I help out on some of the local layouts around my area. One of those is John Nye's large HO scale Great Northern, Santa Fe and Union Pacific layout located in Stevensville, MI. My area of work centers around the Santa Fe Terminal and during John's OPS Sessions my job is the Trainmaster for the SF Terminal. The SF Terminal was previously just a staging point for the railroad, however, during the last year or so I have been building it to include an engine servicing facility, a receiving yard, a departure yard, and a customer industrial area.

It became apparent that a loading dock was needed in the industrial area. See photo 1.



Photo 1

A spur track leading into the industrial area was a perfect spot for a 'team track' loading dock.

A little history first; While attending an NMRA convention many years ago I was introduced to a product called Sintra Board by the late great Jim Sacco. Jim was at his booth during the train show with his City Classics products. But he was not just showing his wonderful kits, he was demonstrating how to make roads using Sintra Board. Since then, I have used Sintra Board for the basis of roads and streets on my layout. Jim passed away a couple of years ago; however, he did a video on NMRaX showing his road making process. That video is available on the NMRA YouTube site at: <https://www.youtube.com/watch?v=hRniZRaY3kk>

### Constructing the HO Scale Concrete Dock

After looking at the available space, I decided to make a concrete style loading dock and extend it as far as possible in the area available. Because I have used Sintra Board many times over the last 15 years or so I decided to use it instead of styrene plastic. Sintra Board is water resistant and the process I was going to use to create the concrete colors was going to use water. Sintra Board is also very strong in thickness of an 1/8" and larger. Perfect for this project. I really didn't do much measuring, only making a rough sketch of the area. There were two dimensions that I needed, and they were the height of the dock as it had to be correct for the spur track that was mounted on raised roadbed and also the height and length of the ramps at the end of the dock. The rest of the dock just had to fill in the area between the tracks. Refer back to photo 1.

Construction of the dock was pretty straight forward and required very little reinforcement of the deck area.

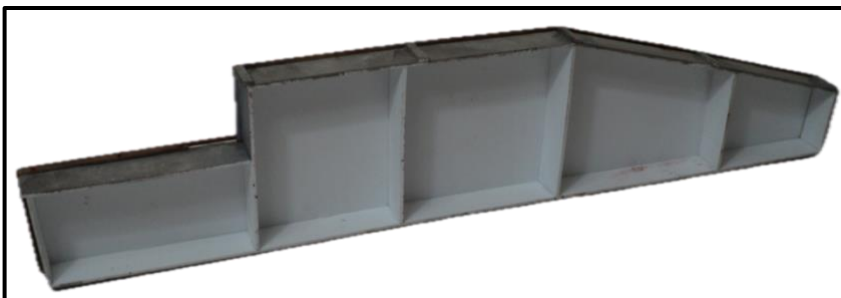


Photo 2

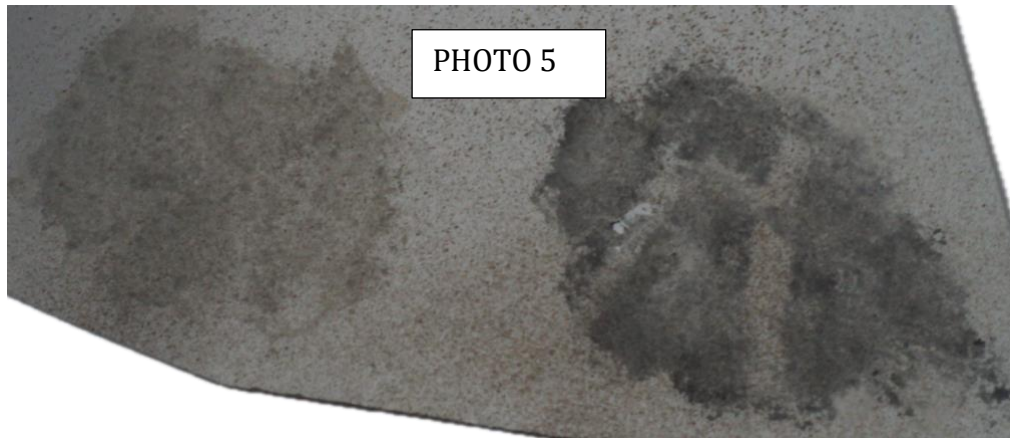
Showing the underside of the dock with the minimal support cross bracing.



I used 1/8" white Sintra Boards to construct the loading dock. To start the painting process I sprayed the dock with RUST-OLEUM CHALKED AGED GRAY. Then came the process of using a combination of various shades of gray to simulate a concrete appearance. The colors were applied (dabbed on) with small pieces of a sponge. A large pore grout sponge is perfect for this application. See photos 3,4 and 5. I made a small color board to experiment with the paints. I used a scrap piece, sprayed with the aged gray. The practice scrap was also splatter sprayed with a common gray primer held about 4 feet above the scrap piece to give me some contrast. Then I used the three colors of gray on the left of photo 3 for a light concrete effect and the three colors on the right for a darker concrete effect.. Obviously all of the colors can be used in any combination to get the results you are trying to achieve.

Light effect: Woodland Scenics Concrete #C1217, Stone Gray #C1218 and Apple Barrel Pewter Gray

Dark effect: Woodland Scenics Concrete #ST1454, Slate Gray #C1219 and Asphalt #ST1453



After the dock was constructed and the concrete color was achieved to a display a well-used dock I applied a wood belt line around the perimeter. The side timbers are scale 6'X 12' nominal. The timbers on the top of the perimeter are scale 8' X 8' nominal. I used long pieces and then scribed a parting slot at appropriate locations to simulate short lengths of installed timbers. The scribed slots were highlighted using Tamiya Panel Liner. The timbers were treated with Hunter Line Driftwood and Micro Mark Age-it Easy Brown. After the wood was installed I used Tichy Train Group Truss Rod Ends (Rod, Nut, Washer) pieces to simulate the installation of the timbers to the concrete dock. I measured the sprue holding the RNW to the carrier and uses a drill bit of the appropriate size and drilled holes into the timbers. The RNW's were then just pressed fit into the drilled holes and glue was not required. The RNW were brushed with Doc O' Brians Dirty Rust weathering powder. See photo 6 and 7 for these products and the tools used for the construction project. Ladders were installed on the track side of the dock for easy access by workers.



PHOTO 6



PHOTO 7

Below are detail photos of the timbers, RNW's and the ladder installations on the completed dock and photos of the dock on the railroad ready to receive and ship products.





## Midwest Region NMRA

I need your assistance. I am compiling a history of the Midwest Region, and I am looking for a few older editions of the Waybill. Specifically, any issues published during 1966 through 1971.

Please contact me by replying to this email or directly at:

[indycop999@hotmail.com](mailto:indycop999@hotmail.com)

if you have any Waybill issues within this timeframe in your collection.

BTW, you can take a historical look back at the Midwest Region from 1945 to 1964 at:

<https://www.mwr-nmra.org/mwr2016/mwr.about.html#history>

Past issues of the Waybill currently back through 1998 are also available to electronically search or download at:

<https://www.mwr-nmra.org/mwr2016/mwr.waybill.html>

I appreciate your help in completing this story for all to enjoy.

Regards,

John Coy, MMR and MWR President





## National Model Railroad Association, Inc.

## New Member Application

<b>Name:</b>		
<b>Address:</b>		
<b>City:</b>	<b>State/Country</b>	<b>Zip:</b>
<b>Phone:</b>	<b>Birth Date:</b>	<b>Scale:</b>
<b>Email:</b>	<b>Occupation:</b>	

Membership	1 Year	2 Year	Total
<b>Member</b> - All rights & benefits as well as the digital NMRA magazine access.	\$68.00	\$136.00	
<b>Member with Printed Magazine Subscription</b> - All rights & benefits, digital NMRA Magazine access and the Printed Magazine.	\$92.00	\$184.00	
<b>Family</b> - Spouse or minor child of above member. No magazine, no voting rights, not allowed to hold office.	\$10.00	\$20.00	
<b>Sustaining</b> - Mandatory for group memberships (Clubs, Business, Associations). All rights & benefits, digital NMRA Magazine access and the Printed NMRA magazine.	\$120.00	\$240.00	
<b>Student</b> - Between the ages of 19-25 years of age. All rights & benefits, digital NMRA magazine access.	\$40.00	\$80.00	
<b>Membership</b>			\$
<b>General Donation</b>			\$
<b>Merchandise</b>			\$
<b>Region Subscription</b>			\$
<b>Total</b>			\$

Thank you for being a member of the NMRA! It is extremely important to have your current email address on file. This is used for access to the member only section, turntable, ballots, voting, annual donation statements, online renewals and communication. Please be sure to note your email address below.

Email:

Region Subscriptions				
If you do not see your region listed, there is no charge for region subscription! Most regions offer the subscription online on the website.				
21 Northeastern Region	\$12.00	28 Midwest Region	\$6.00	
23 North Central Region	\$10.00	33 Southeastern Region	\$10.00	
26 Pacific Coast Region	\$8.00	36 Sunshine Region	\$12.00	

Make Checks Payable to NMRA. We accept MasterCard, Visa, Discover, and American Express.

Credit Card Number:

Expire Date:     CVV Code:    Signature: \_\_\_\_\_

Mail To: NMRA, P. O. Box 1328, Soddy Daisy, TN 37384-1328

Email: [HQ@NMRA.ORG](mailto:HQ@NMRA.ORG)

423-892-2846

### Thursday Evening Zoom Meets

These meetings are open to all modelers and attract visitors from all over the country. Following the call, a video recording of the event is posted on our YouTube channel. A directory of available videos is provided on our division website at [www.nmra-michiana.org](http://www.nmra-michiana.org). If you would like to receive the weekly invite that is sent out for these sessions, please contact me at [greg@uncleheavy.com](mailto:greg@uncleheavy.com).

### Michiana Division YouTube Channel is now live!

You can now view videos from our Division ZOOM meetings and other event videos. Check out our YouTube channel at <https://www.youtube.com/channel/UCbvaWZMhVoRweILW3aiXZlQ>

***Please send articles, news items, photos and comments to the Editor of the Michiana Division FORM-19 Newsletter to.***

***Chuck Hart, email: [chart7968@yahoo.com](mailto:chart7968@yahoo.com)***

***by December 21st to be included in the January 2026 Winter issue of the FORM-19 Newsletter.***

### Michiana Division - 2815

The Michiana Division was activated effective September 13, 2009.

Includes the following Counties in Indiana: Elkhart, Fulton, Jasper, Lake, La Porte, Marshall, Newton, Porter, Pulaski, Saint Joseph, and Starke and the following Counties in Michigan: Berrien and Cass.

### Michiana Division Committees

AUDIT COMMITTEE	JIM TEMPLE
NOMINATING COMMITTEE	JIM TEMPLE
ELECTION COMMITTEE	JIM TEMPLE
MEMBERSHIP COMMITTEE	VACANT
CLINIC COMMITTEE	VACANT
INTERNET COMMITTEE	GREG BUELTMANN
PUBLICATIONS COMMITTEE	CHUCK HART
CONVENTION COMMITTEE	GREG BUELTMANN
MEET LOCATION COMMITTEE	VACANT
AP CHAIRMAN	RON CHRISTENSEN, MMR

We are always looking for help with organizing and making the division stronger from within the membership. Please consider taking the load off by volunteering a small amount of your time.

DIV. SUPERINTENDENT	GREG BUELTMANN	<a href="mailto:greg@uncleheavy.com">greg@uncleheavy.com</a>
CHIEF CLERK	VACANT	
PAYMASTER	JIM TEMPLE	<a href="mailto:jngtemple@yahoo.com">jngtemple@yahoo.com</a>
DIRECTOR-AT-LARGE	DAN BREWER	<a href="mailto:dbrewer@nd.edu">dbrewer@nd.edu</a>
DIRECTOR-AT-LARGE	RON CHRISTENSEN, MMR	<a href="mailto:rxensen@yahoo.com">rxensen@yahoo.com</a>
DIRECTOR-AT-LARGE	CHUCK HART	<a href="mailto:chart7968@yahoo.com">chart7968@yahoo.com</a>
DIRECTOR-AT-LARGE	ROBERT PETIT	<a href="mailto:bobpetit422@yahoo.com">bobpetit422@yahoo.com</a>
DIVISION DIRECTOR	ROD THOMSON	<a href="mailto:rthomson3003@gmail.com">rthomson3003@gmail.com</a>